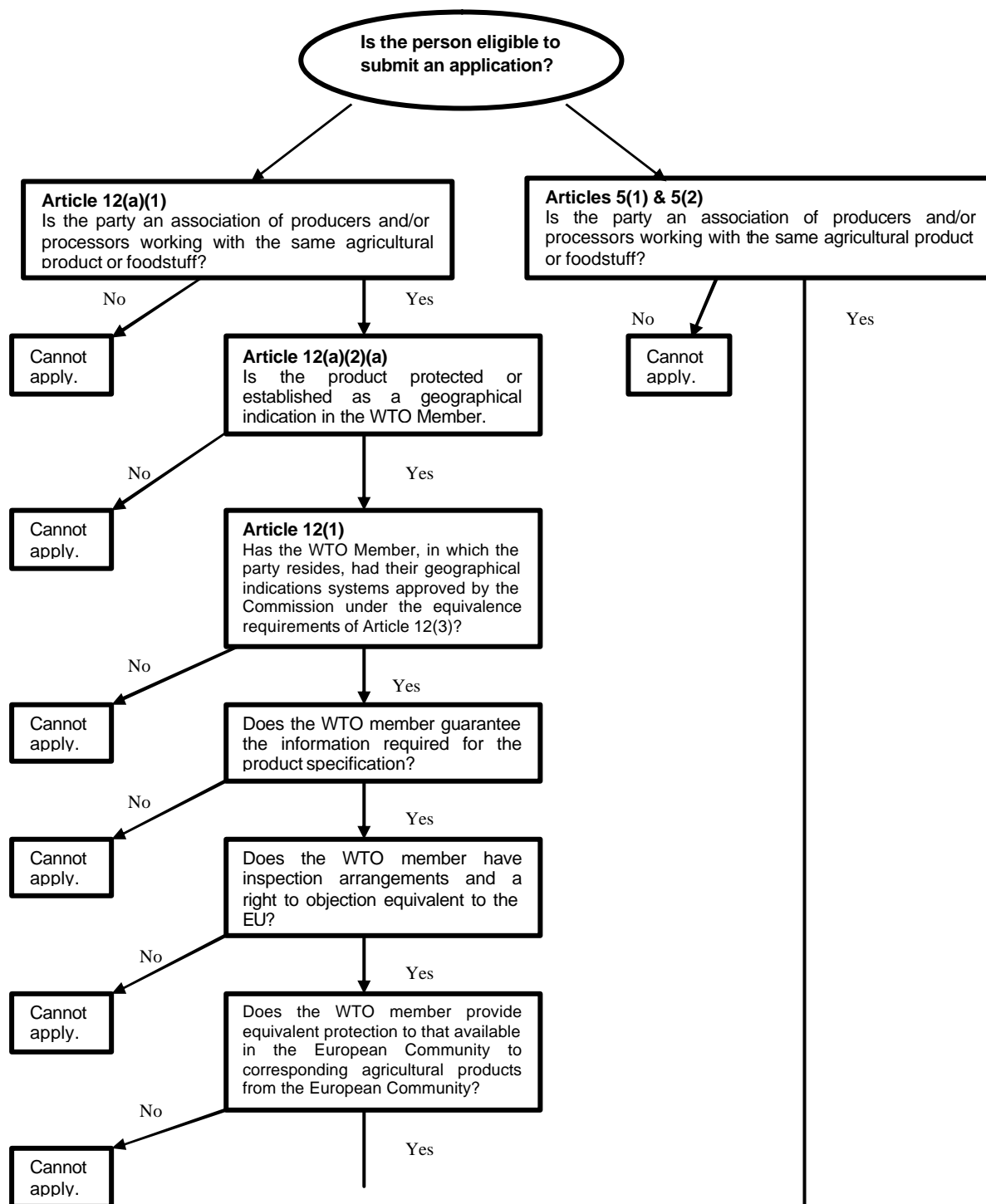


**EXHIBIT NZ-1**

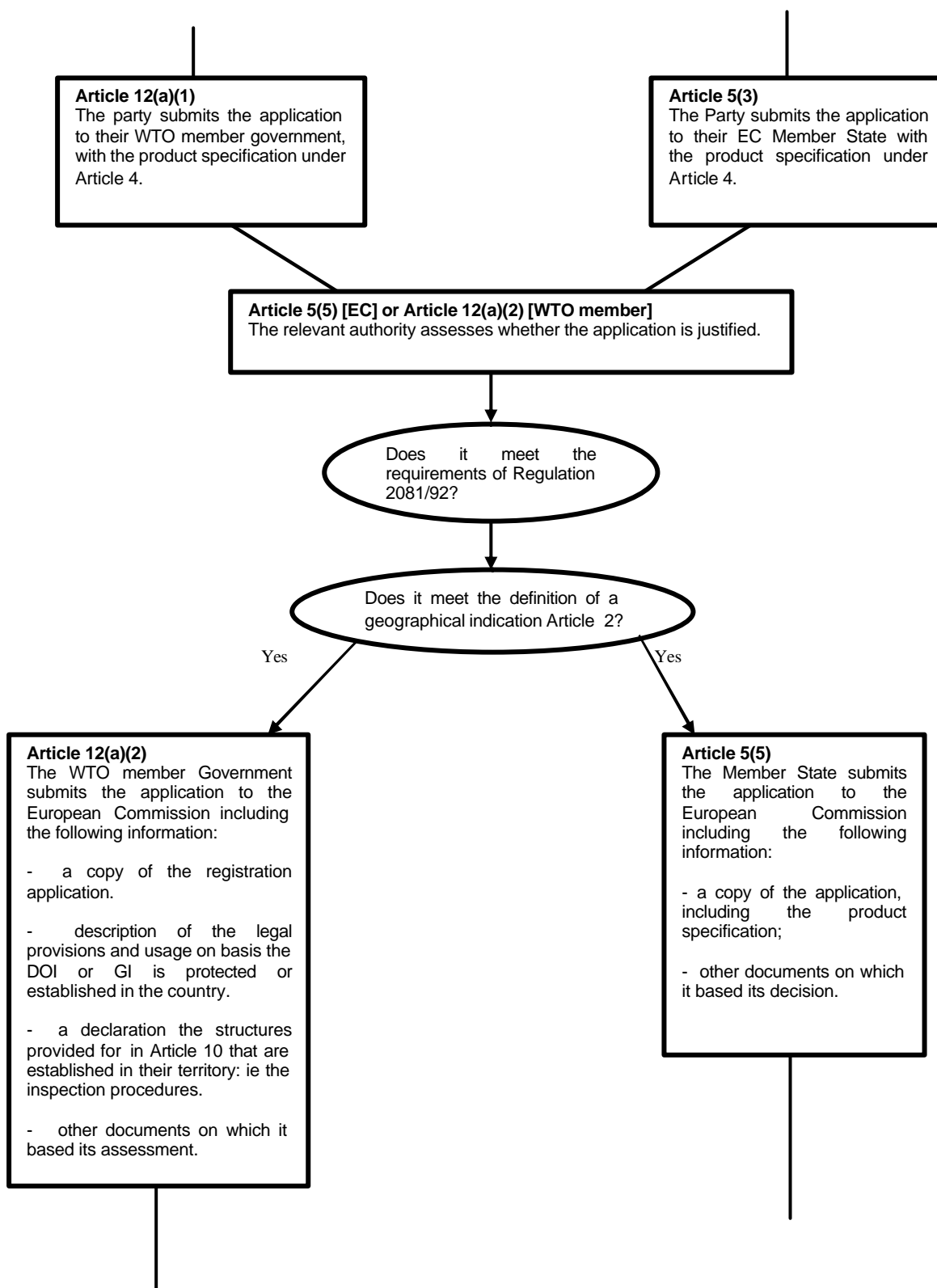
**APPLICATION PROCESS FOR THE REGISTRATION  
OF A GEOGRAPHICAL INDICATION UNDER EC REGULATION 2081/92<sup>1</sup>**

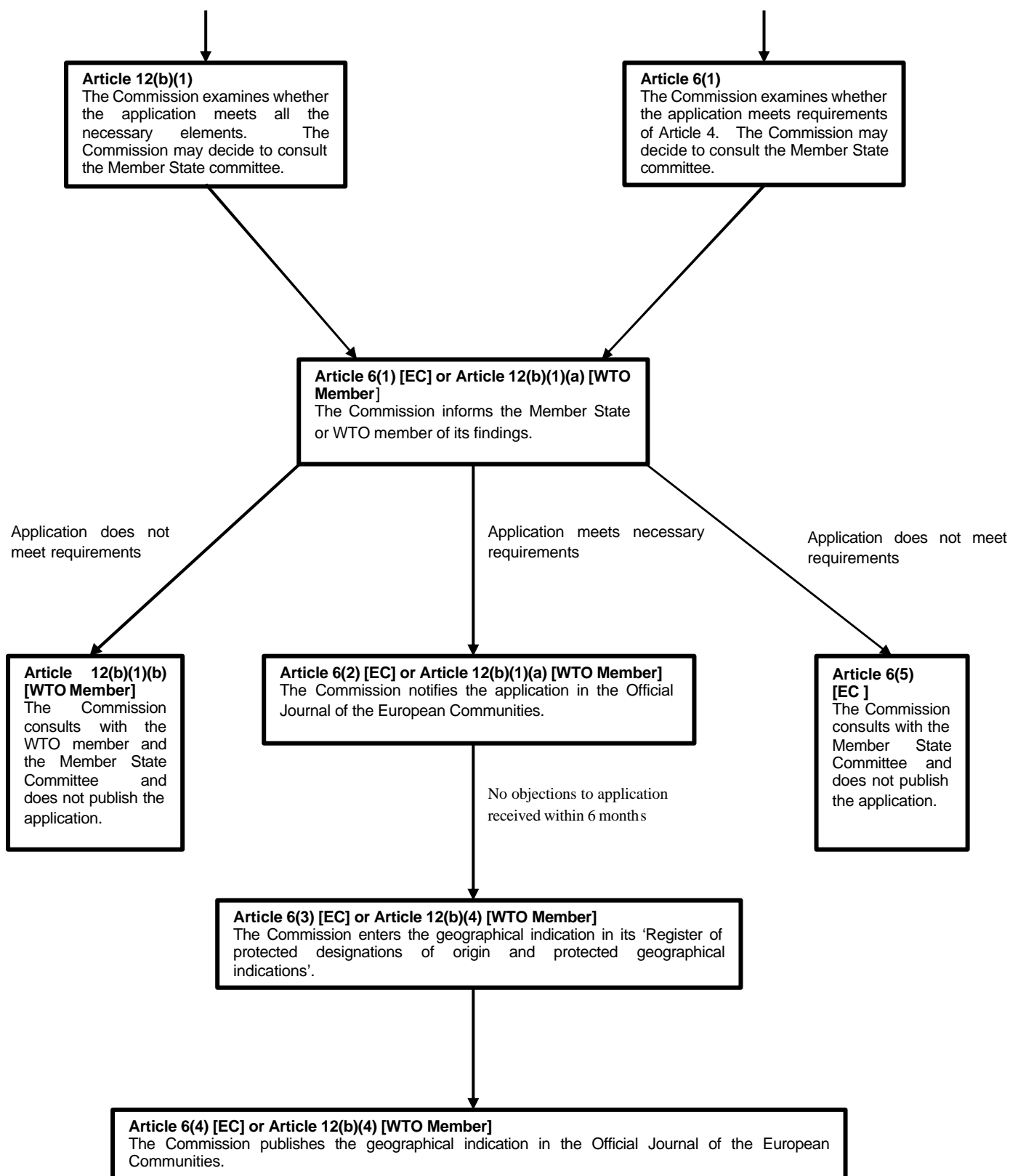
**WTO Member**

**EC member State**



<sup>1</sup> Note this flow-chart excludes procedures relating to homonymous names and the procedures applicable to third countries that are not WTO Members.



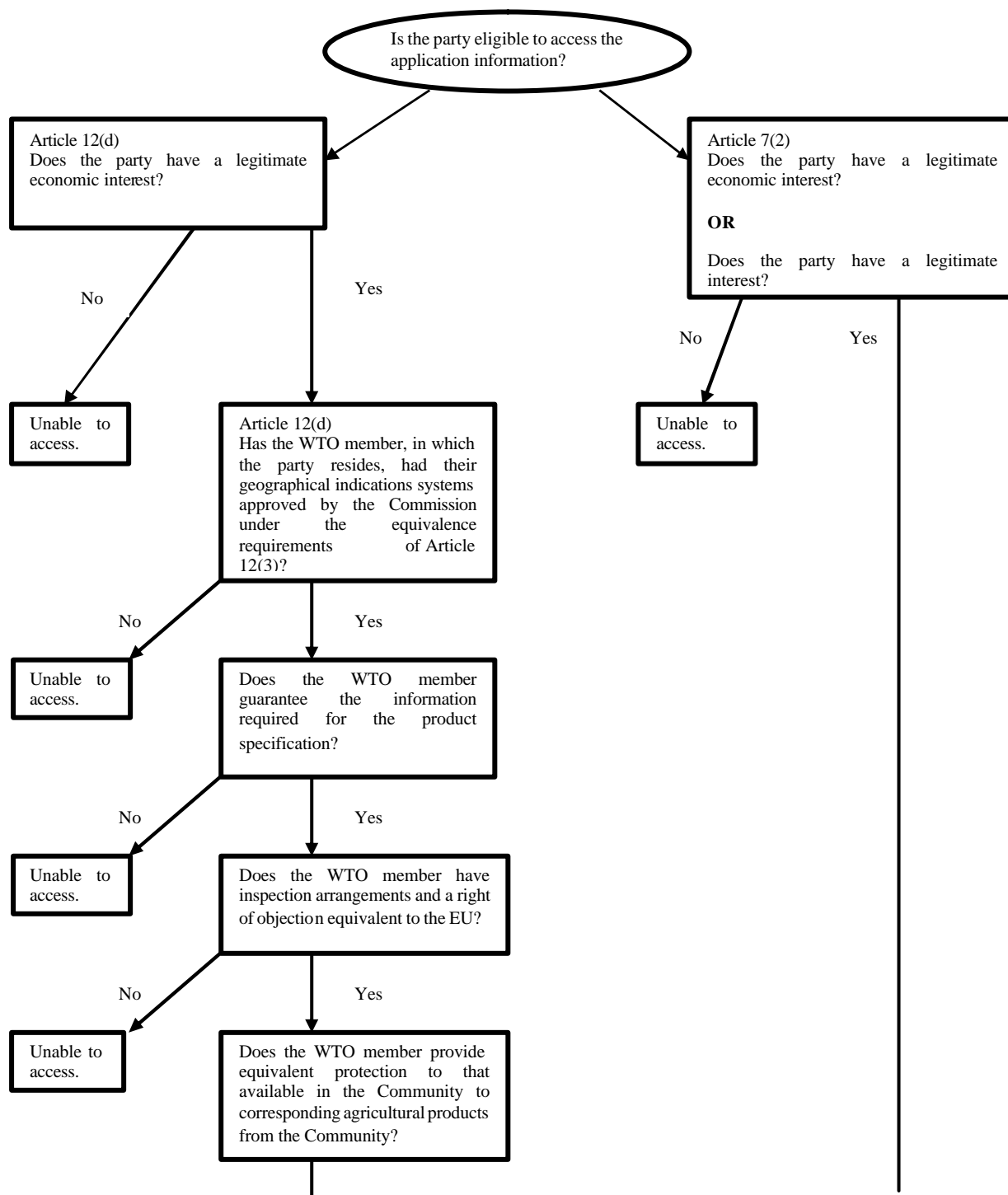


**EXHIBIT NZ-2**

**OBJECTION PROCESS DURING THE REGISTRATION OF A  
GEOGRAPHICAL INDICATION UNDER EC REGULATION 2081/92<sup>2</sup>**

**WTO Member Objection**

**EC Objection**



<sup>2</sup> Note, this flow-chart excludes homonymous names and the procedures for third countries that are not WTO Members.

